



PARKWAY

BY PRESTIGE ONE

PARKWAY

BY PRESTIGE ONE

Welcome to Parkway by Prestige One. Designed with your lifestyle in mind, Parkway combines a premier location in Meydan with exceptional amenities to create a home that truly inspires.



PREMIER LIFESTYLE IN MEYDAN

Parkway by Prestige One opens the door to an exceptional lifestyle. Situated in the heart of Meydan, it brings together luxury, exclusivity, and the vibrant energy of Dubai. Whether you prefer a peaceful retreat or a lively urban setting, Parkway offers the ideal mix of both.










WHY PARKWAY?

Parkway is a community built for those who value comfort, style, and convenience. From its prime location to its well-curated amenities, Parkway ensures every moment is meaningful and fulfilling.



PARKWAY LOCATION



MEYDAN:

STRATEGIC CHOICE ALIGNING WITH DUBAI'S VISION



INNOVATION AND VISIONARY DEVELOPMENT

Meydan focuses on cutting-edge design and technology, aligning with Dubai's ambition to be at the forefront of global urban development.



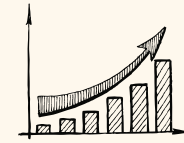
LUXURY AND EXCLUSIVITY

Meydan contributes to Dubai's reputation for high-end living, offering sophisticated properties and premium amenities tailored for all.



GLOBAL APPEAL

With major attractions, Meydan helps solidify Dubai's role as a global destination, enhancing tourism and real estate.



URBAN GROWTH AND EXPANSION

Meydan's developments are part of Dubai's long-term strategy to expand and grow into a more diverse, urban space.



WORLD-CLASS INFRASTRUCTURE

Meydan's infrastructure supports Dubai's goal of building a state-of-the-art, future-proof city with easy connectivity.





PRIME INVESTMENT HUB

Investing in Meydan offers numerous advantages that make it a prime choice in Dubai's real estate market:



Capital Appreciation



Prime Location



Demand for Units



High Rental
Demand

meydan

Reputation of
Meydan

WORLD CLASS AMENITIES

RACECOURSE



Experience the thrill of world-class horse racing at the iconic Meydan Racecourse, home of the Dubai World Cup.

LAGOON



Enjoy a beachfront lifestyle in the heart of Dubai at the world's largest man-made crystal lagoon in Meydan District One.

GOLF



Tee off at the prestigious Meydan Golf course, offering a challenging and scenic golfing experience.

PARK



Relax and unwind in Meydan's lush green parks, providing tranquil spaces for leisure and recreation.

RAS AL KHOR

Living near Ras Al Khor Wildlife Sanctuary presents a rare connection to Dubai's natural landscape. Residents can enjoy breathtaking views and the calm ambiance of one of the region's most celebrated ecological treasures.



COMMUNITY PARK

Escape into an oasis of greenery at Community Park, located right next to Parkway. Whether you're strolling through vibrant gardens, enjoying peaceful moments, or engaging in outdoor activities, this is where tranquility and energy exist in perfect harmony.





PRESTIGE ONE
DEVELOPMENTS

A DESIGN THAT REFLECTS NATURE

Designed by KIEFERLE & Partner, Parkway's flowing curves and organic lines embody elegance and innovation. This architectural masterpiece integrates the beauty of the outdoors into every corner—creating a home that feels both luxurious and connected to nature.

A CONNECTION TO THE COMMUNITY

Parkway overlooks a vibrant and growing neighborhood, offering a sense of home and belonging. With expansive green spaces and stunning views, it creates a perfect setting for relaxation and engagement. This is a place where calm surroundings complement the energy of city living.



A LANDMARK ON A GRAND SCALE

Parkway stands proud on one of Meydan's largest plots—emphasizing its grandeur and exclusivity.



CRYSTAL LAGOON VIEWS

Parkway offers breathtaking views of the iconic crystal lagoon, adding serenity to everyday life.



VIEWS OF MEYDAN'S LARGEST PARK

Wake up to the vibrant beauty of Meydan's largest park every day.

LIVE IN PRESTIGE

Every aspect of Parkway is designed with care, ensuring each resident enjoys a sense of ease and purpose. From its tranquil surroundings to its enriching amenities, Parkway provides an environment where you can thrive.





PRESTIGE ONE
DEVELOPMENTS

A WELCOMING STATE OF ELEGANCE

Enter the beautiful Parkway lobby that combines sophistication and natural elements, creating a serene and luxurious first impression.







PARKWAY INTERIORS

Parkway by Prestige One embodies contemporary elegance and refined luxury, crafted to cater to the lifestyle of discerning residents. Every element of the development is thoughtfully designed to deliver an exceptional blend of comfort and sophistication.



ELEGANT LIVING AREA

Experience the thoughtfully designed Parkway living room, crafted for both comfort and style. This inviting space offers a warm ambiance, perfect for unwinding, hosting, or simply enjoying moments of peace.









LUXURY KITCHEN & DINING

The Parkway kitchen and dining area is designed for those who value both functionality and elegance. With a layout that inspires creativity, this space is ideal for preparing meals, enjoying intimate gatherings, and making lasting memories.

SERENE BEDROOM

Enter the Parkway bedroom, designed as a peaceful sanctuary where elegance and comfort meet. With soothing tones and thoughtful details, this space invites you to unwind and recharge.





BATHROOM RETREAT

The Parkway bathroom is a haven of comfort which promotes contemporary design and soothing aesthetics. This space transforms daily routines into moments of pure relaxation.



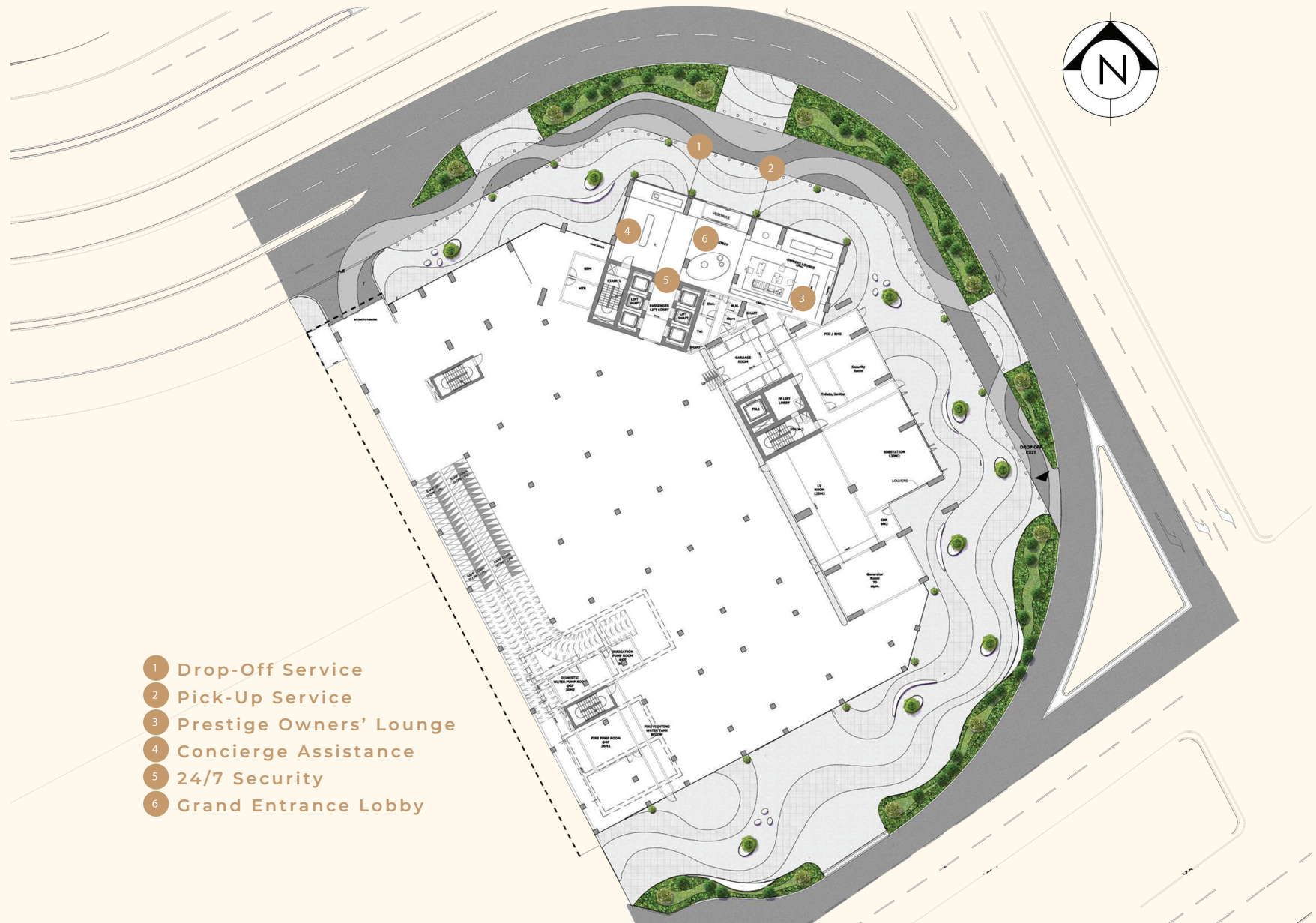
A LIFESTYLE OF EASE

Parkway by Prestige One brings a sense of comfort and simplicity to everyday life. With well-planned spaces and refined design, it creates an inviting environment for rest, work, and connection.



GROUND FLOOR AMENITIES

The ground floor embodies effortless luxury with spaces focused on comfort, ease of access, and personalized services, ensuring a smooth and welcoming experience from the moment you arrive.



GROUND FLOOR AMENITIES PLAN



LOBBY



PODIUM LEVEL OUTDOOR AMENITIES

On the outdoor side, the podium features open spaces that harmoniously blend with the natural surroundings, creating an inviting environment for residents to enjoy the outdoors and engage with nature.



- 1 Splash Adventure Zone
- 2 Aqua Play Park
- 3 Children's Adventure Park
- 4 Tennis Court
- 5 Volleyball Court
- 6 Badminton Court
- 7 Basketball Court
- 8 Miniature Golf Course
- 9 Family Lagoon
- 10 Pool Bar
- 11 Outdoor Theater
- 12 Barbecue Garden

PODIUM LEVEL AMENITIES PLAN - OUTDOOR



FAMILY LAGOON



OUTDOOR CINEMA

PODIUM LEVEL INDOOR AMENITIES

The indoor amenities at the podium level include thoughtfully designed recreation spaces, relaxation areas, and community engagement zones, offering a perfect setting for comfort and connection.



PODIUM LEVEL AMENITIES PLAN - INDOOR

CLUB LOUNGE

The Club Lounge provides a welcoming environment for relaxation and gathering. With its stylish interiors and thoughtful layout, it's the perfect spot for both quiet moments and social interaction.







ARCADE



INDOOR THEATER



Play
Play
Play

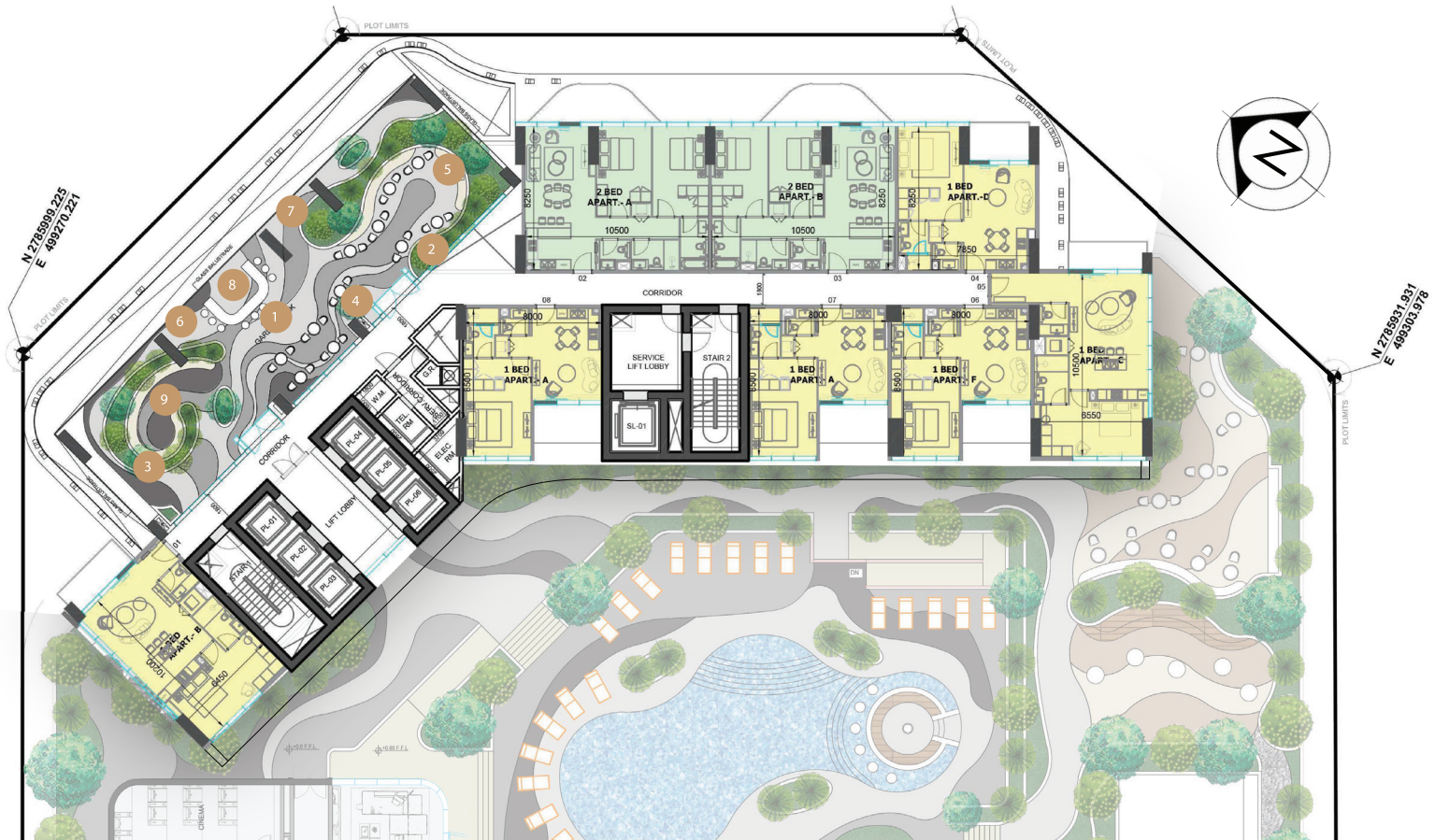
LITTLE EXPLORER'S ZONE



MALE AND FEMALE CHANGING ROOM

12TH FLOOR AMENITIES

These floor amenities integrate greenery and sustainable living elements, fostering a tranquil and innovative environment that brings the outdoors into elevated urban living.



- 1 Amazonica
- 2 Urban Farm
- 3 Hanging Garden

- 4 Plant Nursery
- 5 Culinary Kitchen
- 6 Observation Deck

- 7 Telescope Viewing Deck
- 8 Leisure Deck
- 9 Zen Garden

12TH FLOOR AMENITIES PLAN

PARKWAY
BY PRESTIGE ONE



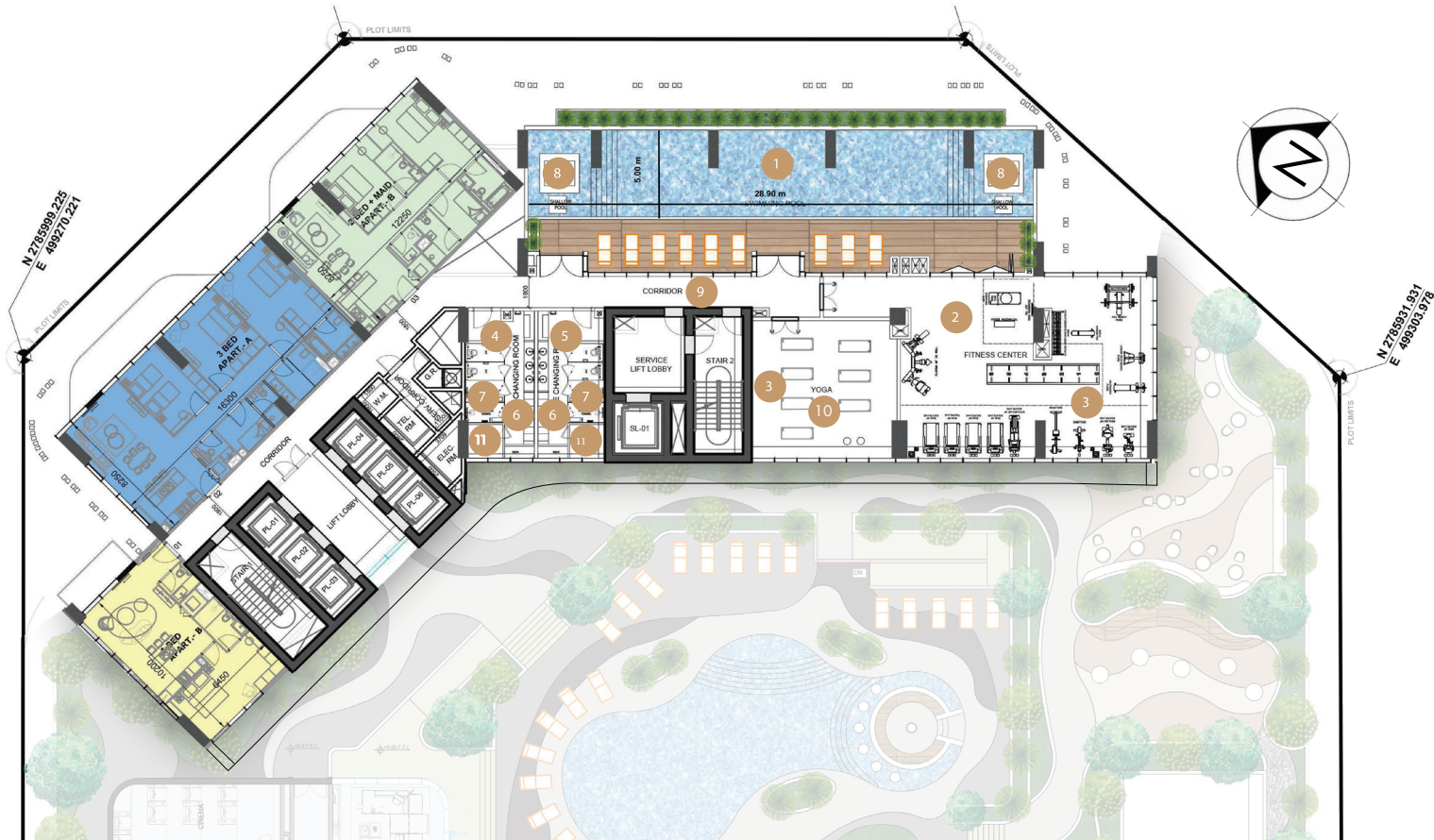


LEISURE DECK

Enter the elegant Parkway kitchen and dining area, where modern sophistication blends seamlessly with natural elements, offering a serene and luxurious space for culinary

21ST FLOOR AMENITIES

The 21st floor, being high, is dedicated to indulgence and wellness, providing serene, world-class spaces with breathtaking views, designed to help you unwind and recharge in style.



- | | | | |
|---------------------------|------------------------|----------------------------|-------------------------|
| 1 Skyline Infinity Pool | 4 Male Changing Room | 7 Rainforest Showers | 10 Prestige Yoga |
| 2 Prestige Fitness Center | 5 Female Changing Room | 8 Sunken Loungers | 11 Prestige Spa & Sauna |
| 3 Virtual Trainer | 6 Locker Area | 9 Prestige Wellness Center | |

21ST FLOOR AMENITIES PLAN

PARKWAY
BY PRESTIGE ONE





SKYLINE INFINITY POOL

Enter the elegant Parkway kitchen and dining area, where modern sophistication blends seamlessly with natural elements, offering a serene and luxurious space for culinary



THERE
IS
NO
FINISH
LINE

PRESTIGE FITNESS CENTER



YOGA STUDIO



PRESTIGE ONE

Prestige One Developments stands tall as a global powerhouse in real estate development. Since our inception, we do more than build homes—we craft experiences where luxury intertwines with lifestyle. Having the customer, community, and design at the heart of its ethos, Prestige One Developments is a premier Dubai real estate developer dedicated to high-quality lifestyles and discerning buyers.

prestigeone.ae



Subject to marketing T&C*
Scan to know more

800 PRESTIGE

All images, renderings, floor plans, layouts, and other visuals in this material are indicative artistic impressions for conceptual purposes only and do not represent actual photographs of the project or Units and is copyright of the Developer which shall not be reproduced or used without consent. Designs, finishes, colors, materials, dimensions, landscaping, amenities, and surrounding views may vary during design development or construction. Furniture, appliances, and decorative elements shown are illustrative and only included where expressly stated in the Sale and Purchase Agreement (SPA). This material does not constitute an offer, warranty, or representation beyond the specifications and obligations expressly set out in the SPA.



PRESTIGE ONE
DEVELOPMENTS