



LIMASSOL
PARK



Welcome to a Green Haven



LIMASSOL
PARK






High Standard
of Education


Currency
Euro


High Quality
Healthcare


340
Days of
Sunshine


Official languages
English, Greek


2 International
Airports


Area / Size
9,25km


Total Population
1.2m


57 Blue Flag
beaches

Cyprus A living dream

Cyprus is an island of many experiences rolled into one. Witness 340+ days of sunshine and mild winters. Lose yourself amidst white sandy beaches or lush green mountains in the same day. Find awe-inspiring historic ruins, a cosmopolitan life-style, luxury living and a unique quality of life.

Be part of the Island's thriving international business community and enjoy the wide range of tax & lifestyle benefits for corporates and individuals.

What's more, Cyprus has been voted the safest small country in the world.

It's more than just a destination.
It's a living dream.

Strategically Located

WORLD MAP

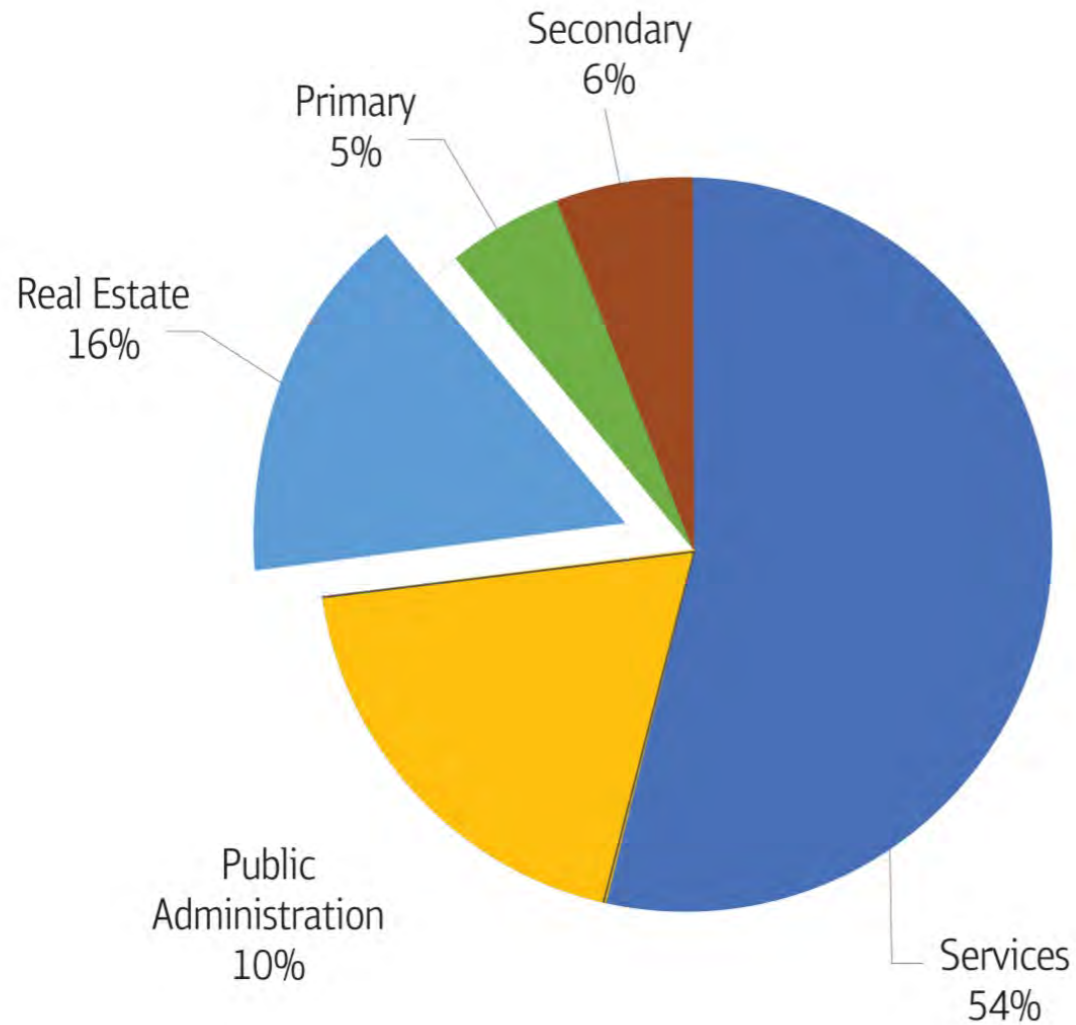


CYPRUS ISLAND



Excellent business environment | High quality of life | Admirable regulatory form

Access to markets | Security and safety | Pleasant climate



A thriving *business destination*

A member state of the European Union, Cyprus serves today as a gateway to Europe and a market of 500 million EU Citizens as well as a portal for investment from Europe into Russia, Middle East, India & China.

The island's ideal strategic location, attractive and transparent tax regime, advanced infrastructure, comprehensive corporate services, high calibre staff and excellent quality of life are the key reasons why Cyprus is one of the top choices in the region for international headquartering as well as for non-dom tax residents.



Modern Banking & Legal system



EU Member



Pro-Business Government



Highly skilled English speaking workforce



Excellent infrastructure



Safe & Cosmopolitan life



Advantageous EU approved tax regime



Stable political & business environment

HIGHLY FAVOURABLE TAX REGIME

12.5%
Corporate Tax rate

2.5%
Intellectual Property Tax rate

0%
Tax on sale of shares

0%
Tax on dividends to shareholders


Non domicile principle

0%
Inheritance tax



One of
Europe's fastest
growing economies

Fuelled by a surge of international companies establishing headquarters on the island, increases in tourism as well as real estate and other FDI and privatisations, the island's economy has been growing from strength to strength.

Backbone infrastructure projects like luxury marinas, golf courses, the integrated resort casino and the cruise hub terminal have either materialised in the recent years, or are on their way to materialisation aiming to further enhance the islands touristic product and increase touristic arrivals, especially at the highest end of the market.

New fields and industries, such as the oil & gas, software development, international funds management and intellectual property rights management present additional opportunities to the island's economy



Major hub due to the recent discoveries of hydrocarbons



City of Dreams Mediterranean, Europe's Biggest Integrated Casino Resort by Melco International in Limassol



Dubai Ports & Eurogate 25 year concession to operate the port of Limassol



Infrastructure investments in Marinas in all coastal cities



Infrastructure investments into Golf Courses, mainly in the areas of Paphos & Limassol





A destination designed for
high quality
of life

What attracts the international business community, high net-worth individuals, the adventure seekers, and holiday makers to Cyprus?

There could be a million reasons, but only one underlying factor: a superior quality of life.



Limassol:

A vibrant business hub

by the sea

Stretching along a sandy coastline of 17 kms, where business blends perfectly with pleasure, Limassol is a cosmopolitan high-end tourist destination, as well as a world-renowned international business centre.

Conveniently located 40 minutes away from both international airports, the capital of Nicosia and the evergreen Troodos Mountains, everything about it – from arriving to the city, activities in the capital, enjoying the unspoilt Cyprus surroundings, quaint traditional villages and unspoiled sandy beaches – are all within easy reach.



A destination for the whole family

A bustling nightlife with contemporary discos and places of entertainment, there's never a dull moment year-round.

Fresh Mediterranean cuisines can be enjoyed at numerous restaurants, featuring both local and global flavours.

Sporting options include: Air Sports, Golf, Horse Riding, Kite surfing, Paragliding, Shooting, Snow Skiing, Tennis, Sailing, Scuba Diving, Snorkelling, Hiking, Trekking, Mountain & Road Cycling, Canoeing, Mountain Climbing and much more.

Living here offers a unique opportunity to experience a rich cultural heritage throughout the year:

- Carnival – 10 days before Lent (February - March)
- Cyprus Rally (international sporting event) – September
- European Dance Festival – June
- Russian-Cypriot Festival - May
- Beer Festival – July
- Cyprus Film Days – April
- Wine Festival – September
- Lemesia (international sporting event) - October
- Rainbow Festival – November
- Limassol Marathon (international sporting event) - March



A modern *Regional playground*

Capitalising on a very strong outward looking focus, the city aims to become a regional playground for the rich and famous.

The west part of Limassol is preparing to welcome:

- City of Dreams Mediterranean, the biggest integrated Casino Resort in Europe operated by Melco International
- An 18-hole international golf course
- A cruise hub terminal operated by Dubai Ports for 25 years
- A transhipment center operated by Eurogate for 25 years
- Limassol Main shopping Mall (My Mall)
- Aktaia Odos, the city's most vital infrastructure development in decades
- The embellishment of Lady's Mile Sandy Beach

The 1.5km new seafront road will include public realms and parks, pedestrian and cycling routes and it will run through the Limassol Marina to connect the city centre with the Dubai Ports Cruise Hub Terminal, the City of Dreams Mediterranean, and the 18-hole golf course.

*A Gated Resort
Residence*



Purity
is in the air



Inspired by the
bounty of nature





Close to the city centre



LIMASSOL
PARK

Conveniently located southwest of the Limassol historic town centre, in the Akrotiri peninsula in one of the city's most upcoming and green areas. Close by and within a short distance of the Limassol Mall, the Fassouri Waterpark and the famous Lady's Mile Sandy Beach, as well as the City of Dreams Mediterranean Casino Resort.

"Leptos Limassol Park" also benefits from Limassol's central location with no more than 35-40 minutes drive from the International Airports of Paphos and Larnaca and the major cities of Nicosia, Larnaca and Paphos. The nearby Troodos mountains are a haven for nature lovers as well as for those wishing to explore the traditions and customs of Cyprus.

Over 75% of the area is allocated to landscaped gardens with meandering paths and ponds which surround two large free-form swimming pools, as well as children's pools and a playground. There is ample parking, a reception and concierge service, a resident's club, a tennis court and a health spa.

Idyllic surroundings where the benefits of living in Cyprus can be enjoyed to the maximum. Because after all.... Lifestyle Living can be an affordable Luxury.



Green is the colour of joy

One of the most modern and stylish gated resort residences, Limassol Park offers a good selection of 1, 2 and 3-bedroom apartments and penthouses. Conveniently located southwest of the Limassol historic town centre and neighbouring the citrus plantations, on the Akrotiri Peninsular, Limassol Park is located in one of the city's greenest areas.



Open up to spacious outdoor living

Step on to your sprawling balcony and connect with nature. Generous outdoor space – complemented by stunning views – provides ample room, whether you wish to entertain guests or simply stretch-out and breathe-in your elegant surroundings.





A dynamic *investment opportunity*

Demand for Housing
Limassol is booming mainly due to the inflow of international companies and holiday makers. The trend is expected to grow multiple fold with the new investments taking place in the west of Limassol, and which are expected to create at least 4000 new jobs.

Cyprus's most Dynamic Residential Area
The area provides the perfect setting for a relaxing living, yet within a short distance from the buzzing lifestyle of the city. The perfect place to live and work. And there is plenty more to come in the near future with the five star Integrated Casino Resort and the new Limassol Greens Golf Resort just around the corner.

Demand for Touristic Accommodation
With an estimated arrival of over 300,000 tourists for the City of Dreams Mediterranean Integrated Casino Resort alone, the closest hotel 8km away and limited land availability for the construction of hotels in the west coastline of Limassol, demand for touristic accommodation in apartments will boom.

Limited land for residential development
Neighboring the Natura protected area of Akrotiri, development in the area can take place in a limited space.



A Resort Oriented Lifestyle

- Reception / Security
- Gated Community
- Property Management
- Rental Management
- Housekeeping
- Snack Bar
- Mini-Market
- Gym
- Spa





*Never a
dull moment*

- Clubhouse
- Children's Play Area
- Spa
- Lush Landscape Areas
- 2 Adult Swimming Pools
- 2 Kids Swimming Pools



A higher level of
well-being

- Gym
- Spa with Sauna, Steam & Treatment Rooms
- Tennis court



LIMASSOL PARK

PRELIMINARY MASTERPLAN

- 1-GATED ENTRY
- 2-RESIDENTS CLUB WITH RECEPTION
SNACK-BAR
MINI-MARKET
GYM
SPA-SAUNA/STEAM/TREATMENT ROOMS
- 3-2 ADULT POOLS/2 KIDS POOLS
- 4-PRIVATE LANDSCAPE GARDENS &KIDS AREA
- 5-TENNIS COURT
- 6-ADJOINING PUBLIC GREEN AREAS



LIMASSOL PARK

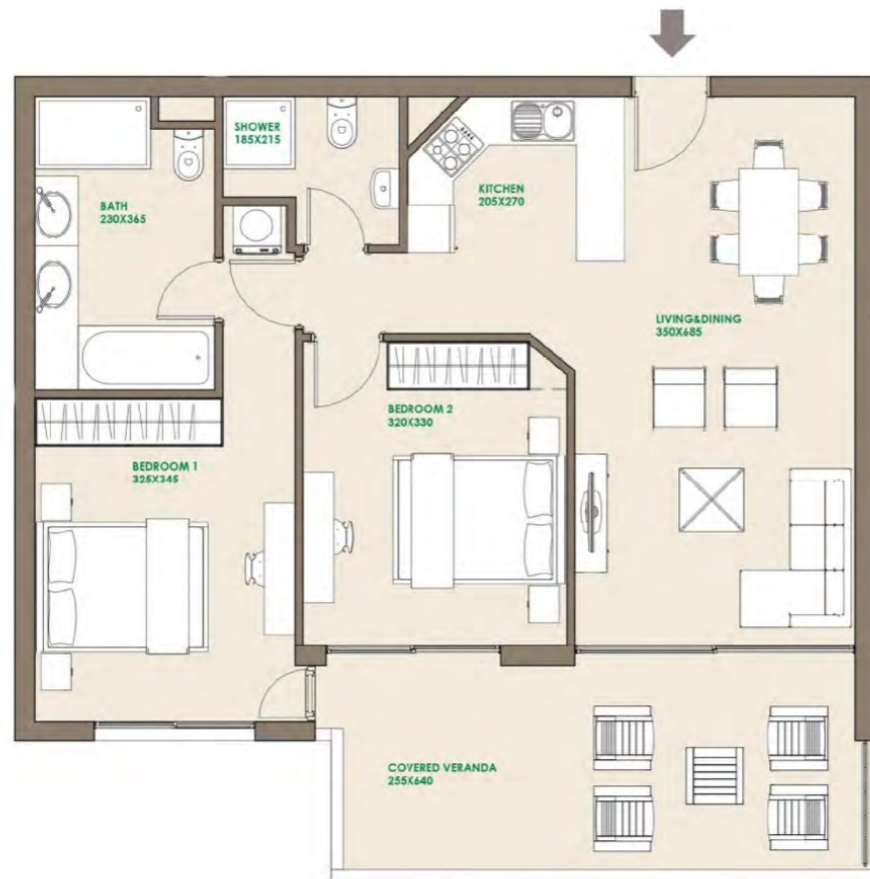


APARTMENT 1 BEDROOM PLUS STUDY

TOTAL COVERED AREA
65.75 (plus communal areas)



LIMASSOL PARK



APARTMENT

2 BEDROOM

TOTAL COVERED AREA
98.20 (plus communal areas)



LIMASSOL PARK



APARTMENT 3 BEDROOM

TOTAL COVERED AREA
125.70 (plus communal areas)
31.80 (uncovered verandas)



LIMASSOL PARK



APARTMENT

3 BEDROOM

TOTAL COVERED AREA
132.50 (plus communal areas)



LIMASSOL PARK



APARTMENT PENTHOUSE

TOTAL COVERED AREA
174 (plus communal areas)
52.45 (uncovered verandas)



Permanent Residence Permit

AT A GLANCE

As a Cyprus Permanent Residency holder, you and your family are free to enter Cyprus without a visa, and need to visit Cyprus once every two years at least for one day. As a Cyprus Permanent Resident, you have the right under certain conditions, to apply for a Cypriot passport following your physical presence on the Island.

- Invest just €300,000 (plus VAT is any) in a new property, from a licensed development company
- Permanent Residence for your whole family
- Fast-track procedure of about 2 months
- Valid for life with no need to renew
- No minimum stay requirement
- Visa-free entry to Cyprus
- Ready-to-move in freehold properties with clear Title Deeds

GET
CYPRUS
PR CARD
IN 2 MONTHS
A EU COUNTRY
INVEST € 300,000
IN PROPERTY



Since 1960



The range of
Leptos
Developments
in Cyprus

- Kamares Village, Tala - Koli
- Olympus and Vikla Villas, Tsada
- Adonis Beach Villas, Chloraka
- Limassol Del Mar, Limassol
- Limassol Blu Marine, Limassol
- Coral Seas Villas, Coral Bay
- Venus Gardens, Chloraka
- Aphrodite Gardens, Kato Paphos
- Coral Bay Villas, Coral Bay
- Coral Gardens, Coral Bay
- Belvedere Villas, Chloraka
- Mandria Gardens, Mandria
- Akamantis Gardens, Polis
- Limnaria Gardens, Kato Paphos
- Aphrodite Springs, Geroskipou
- Leptos Calypso Hotels & Resorts
- Neapolis University Pafos
- Iasis Hospital



No1

SERVICE
EXPORTER
2012-2016

325

COMPLETED
PROJECTS

60

YEARS
OF
EXPERIENCE

1500

EMPLOYEES

5mil

SQM OF
PRIME LAND
FOR DEVELOPEMENT

25000

HAPPY & SATISFIED
HOME OWNERS

25

PROJECTS
CURRENTLY UNDER
CONSTRUCTION

75

COUNTRIES
WITH OFFICES &
SALES NETWORK

Fast Facts

Since 1960



Indicative Current Projects



SEAFRONT LUXURY VILLAS



BESPOKE HILLTOP VILLAS



GATED RESORT RESIDENCES



SEAFRONT LUXURY APARTMENTS



PRIME COMMERCIAL SPACE



SEAFRONT RESIDENTIAL
& SERVICED APARTMENTS

*Enhance
your lifestyle*
in Cyprus

Every new buyer of Leptos Estates property in Cyprus gets the Leptos Gold Card which entitles you to the benefits of our exclusive privilege programme.





PAPHOS - CYPRUS HEADQUARTERS

The Leptos House
111, Apostolos Pavlos Ave,
CY-8046, P.O. Box 60146, CY-8129
Paphos, Cyprus

T: (+357) 26880100
E: info@LeptosEstates.com
URL: www.LeptosEstates.com



LONDON - UK

Leptos UK Ltd.
16, Berkeley Street
Mayfair, London, W1J 8DZ, UK

T: (+44) 208 883 2333
F: (+44) 208 883 6464
E: info@LeptosUK.com
URL: www.LeptosEstates.com



DUBAI - UAE

Office N403 - North Tower,
Emirates Financial Towers,
DIFC, Dubai – UAE

T: (+971) 4 2579306
E: info@LeptosEstates.ae
URL: www.LeptosEstates.ae



CAIRO – EGYPT

Al Fatemieen street,
Alsmailia Square,
Cairo Governorate 11757
Cairo, Egypt

T: (+20) 1144482362
E: info@LeptosEstates.com
URL: www.LeptosEstates.com



BEIJING - CHINA

Level 26, Fortune Financial Center,
No.5, Dong San Huan Road,
Chaoyang District,
Beijing, 100020, China

T: (+86) 10 57750360
E: info@LeptosEstates.com
URL: www.LeptosEstates.cn



SHANGHAI - CHINA

Unit 5, 38F Park Place
1601 W. Nanjing Road,
Jing'an District, Shanghai,
200003, China

T: (+86) 21 61373772
E: info@LeptosEstates.com
URL: www.LeptosEstates.cn



NEW DELHI - INDIA

Leptos Estates
1518, Regus, 15th Floor,
Eros Corporate Tower,
Nehru Place, New Delhi

T: (+91) 011 66155049
E: info@LeptosEstates.com
URL: www.LeptosEstates.com



MUMBAI - INDIA

Leptos Estates - 1129, Platina,
Plot No. - C - 59 , G Block
Bandra Kurla Complex,
Mumbai 400051, India

T: (+91) 22 68841745
E: info@LeptosEstates.com
URL: www.LeptosEstates.com



HO CHI MINH - VIETNAM

Office 7226, VNM- Vincom
Landmark 81, Level 72, Landmark 81,
Vinhomes Central Park, 720 A Dien
Bien Thanh District, Ward 22,
binh Thanh District,
Ho Chi Minh, Vietnam

T: (+84) 708714704
E: info@LeptosEstates.com
URL: www.LeptosEstates.com

Since 1960



AMMAN - JORDAN

Mecca street, Al Hussein towers,
building No 164, 4th floor,
office #403, Amman, Jordan.

T: (+962) 79 816 5299
E: info@LeptosEstates.com
URL: www.LeptosEstates.com



NICOSIA - CYPRUS

9, Dhemetsanis str.
CY-1070 Nicosia
P.O. Box 24862, CY-1304
Nicosia, Cyprus

T: (+357) 22458745
E: Leptosnc@LeptosEstates.com
URL: www.LeptosEstates.com



LIMASSOL - CYPRUS

104, Amathountos Avenue,
Shop 5, 4532 Agios Tychonas
Limassol, Cyprus

T: (+357) 25873233
F: (+357) 25312031
E: info@LeptosEstates.com
URL: www.LeptosEstates.com



ATHENS - GREECE

37, Achaia str.
115 23 Ambelokipi
Athens, Greece

T: (+30) 210 6083800
F: (+30) 210 6083849
E: infoathens@LeptosEstates.gr
URL: www.LeptosGreece.com



CHANIA - GREECE

Panorama Hotel
Kato Galatas, 73 100
Chania, Crete, Greece

T: (+30) 2821020830
F: (+30) 2821033647
E: infochania@LeptosEstates.gr
URL: www.LeptosGreece.com



PAROS - GREECE

Ekatondapiliani
84 400 Paroikia
Paros, Greece

T: (+30) 2284028503
F: (+30) 2284028504
E: infoparos@LeptosEstates.gr
URL: www.LeptosGreece.com

The information, plans, photos and artists' impressions contained in this brochure are for guidance only and do not constitute a representation or an offer to treat.

The Developer reserves the right to effect changes as he may deem appropriate prior to Contract.



Since 1960



Leptos Estates

the Leading property developers