

VIDA

RESIDENCES HILLSIDE

TOWER B 1BEDROOM TYPE C

UNITS P08, 112, 216, 316, 416, 516, 616, 716, 816, 916, 1016, 1116,
1216, 1316, 1416, 1516

SUITE AREA	665.53 SQ.FT	61.83 SQ.M
BALCONY AREA	61.78 SQ.FT	5.74 SQ.M
TOTAL AREA	727.31 SQ.FT	67.57 SQ.M

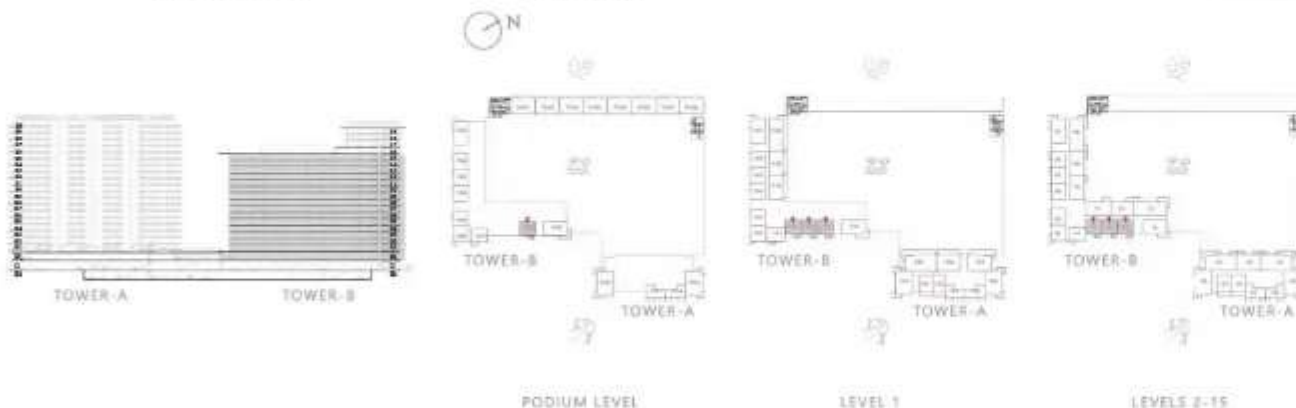
UNITS 111, 113, 215, 217, 315, 317, 415, 417, 515, 517, 615, 617, 715,
717, 815, 817, 915, 917, 1015, 1017, 1115, 1117, 1215, 1217, 1315, 1317,
1415, 1417, 1515, 1517

SUITE AREA	673.17 SQ.FT	62.54 SQ.M
BALCONY AREA	61.78 SQ.FT	5.74 SQ.M
TOTAL AREA	734.95 SQ.FT	68.28 SQ.M



KEY SECTION

KEYPLAN



FLOOR PLAN 1. All dimensions are in imperial and metric, and measured from finish to finish excluding construction tolerances. 2. All materials, dimensions, and drawings are approximate only. 3. Information is subject to change without notice, at developer's absolute discretion. 4. Actual area may vary from the stated area. 5. Drawings not to scale. 6. All images used are for illustrative purposes only and do not represent the actual size, features, specifications, fittings, and furnishings. 7. The developer reserves the right to make revisions / alterations, at it's absolute discretion, without any liability whatsoever.